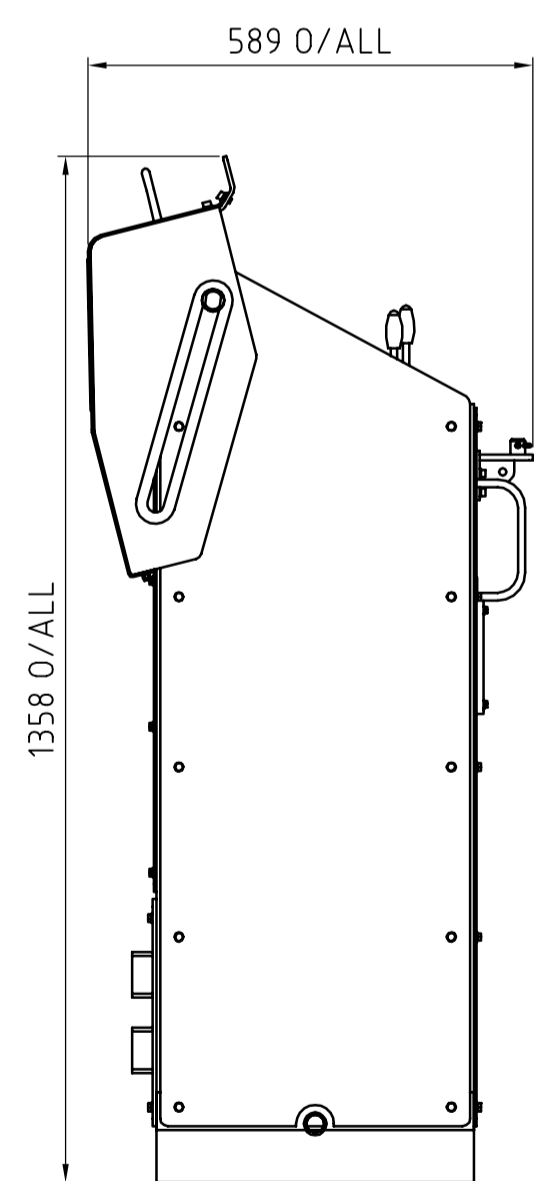
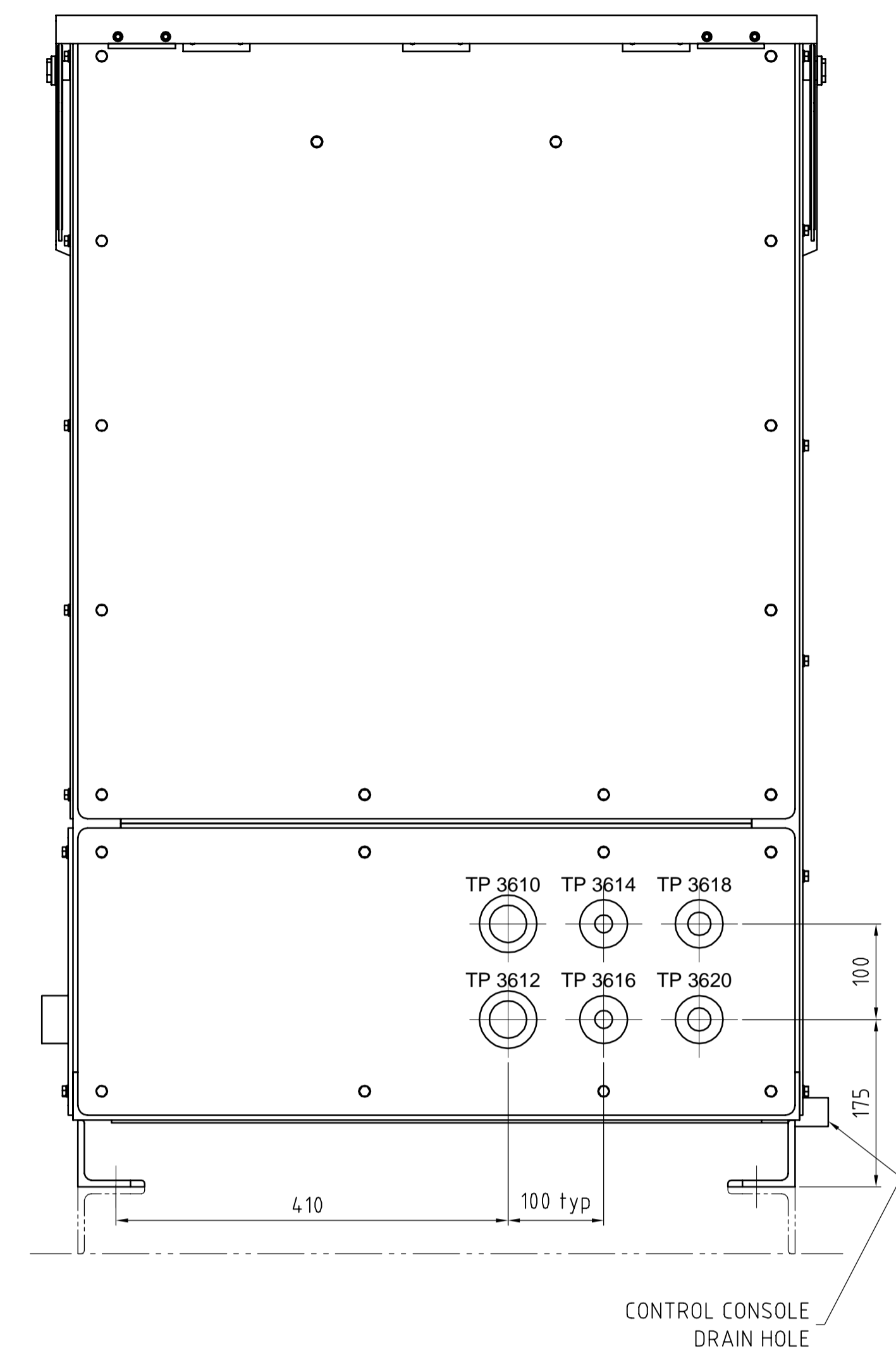
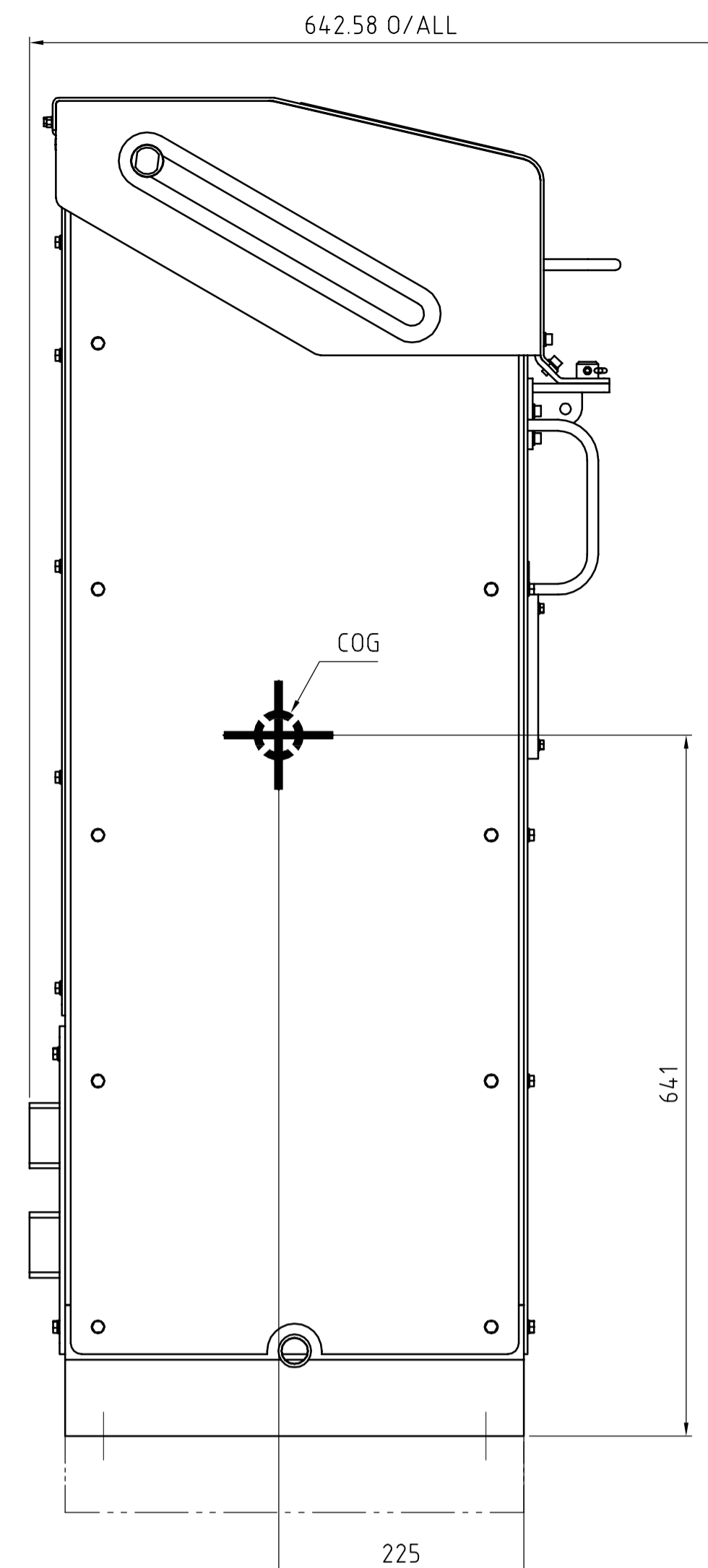
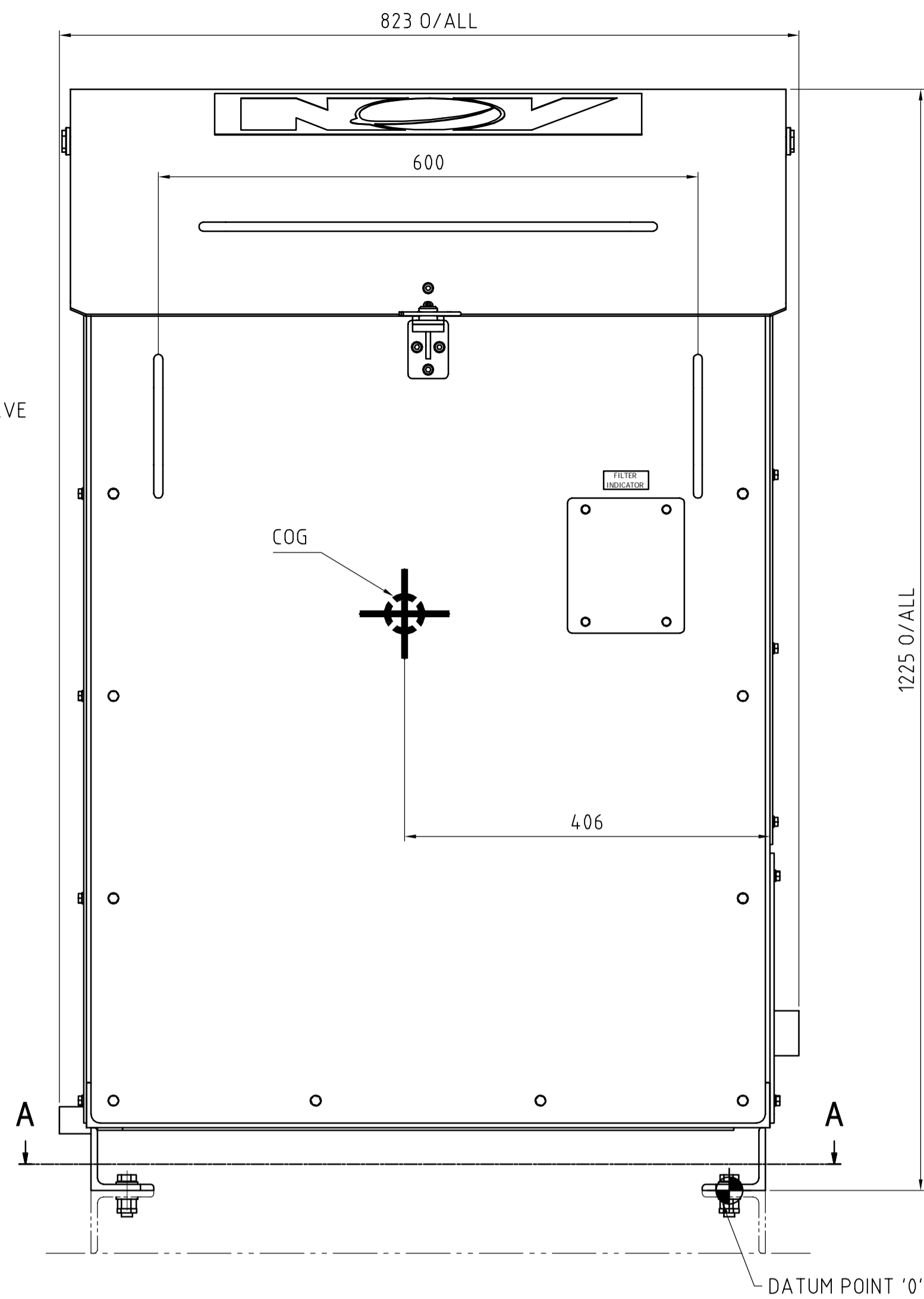
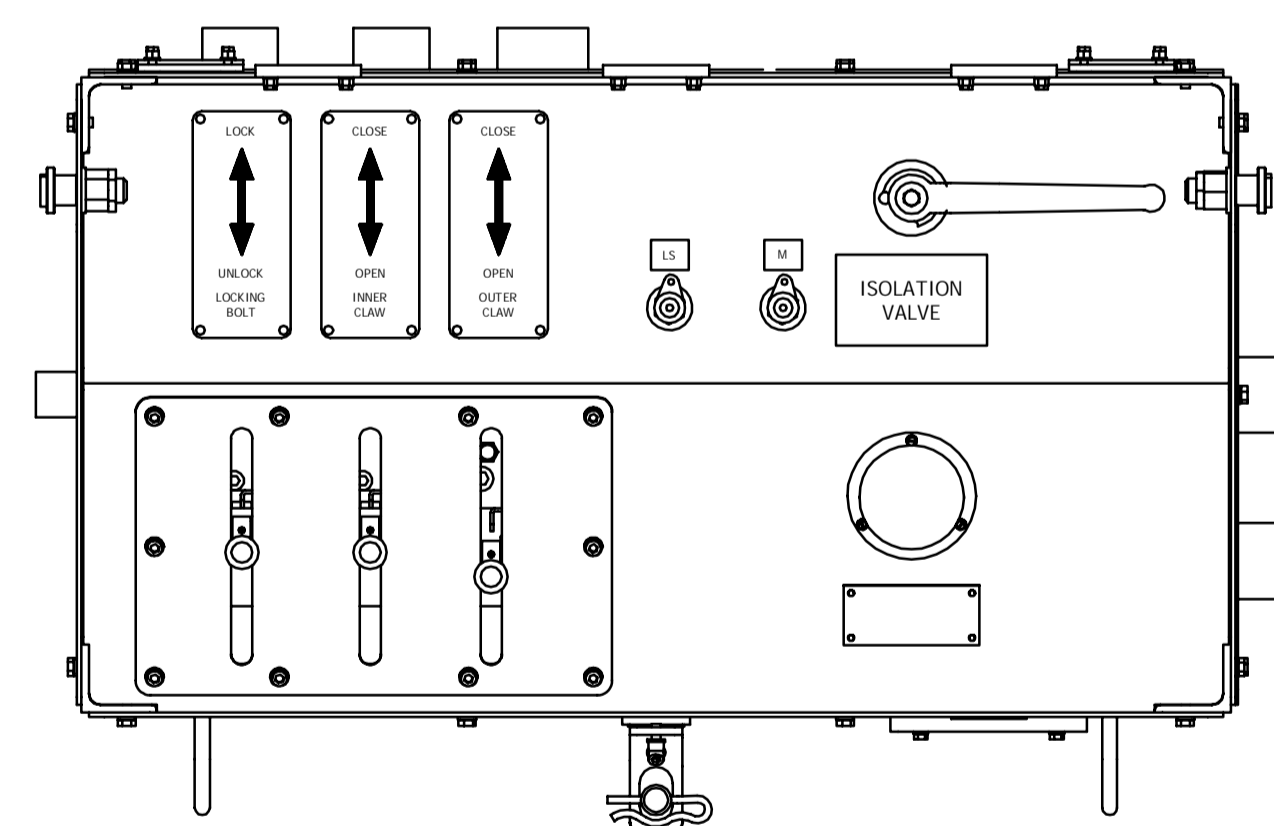


SIDE COVER NOT SHOWN



TOP COVER OPEN POSITION Scale 1:10



TOP VIEW

NOTES :  
 TO BE READ IN CONJUNCTION WITH DRAWING G4736-D1165-G0001 FOR FOUNDATION INTERFACE SEE DRAWING G4736-D1165-G0002 FOR HYDRAULIC FLOW DIAGRAM SEE DRAWING G4736-D1165-H0001  
 CONSOLE WEIGHT = 250 kg.

INTERFACE MOVED TO G4736-D1165-G0002

GLOBAL CO-ORDINATE SYSTEM :  
 X - HORIZONTAL AXIS IN FWD-AFT DIRECTION (FWD = POSITIVE)  
 Y - HORIZONTAL AXIS IN PORT-STBD DIRECTION (PORT = POSITIVE)  
 Z - VERTICAL AXIS (UP = POSITIVE)

Tag Number: 364D1-MX002

NOZZLE SCHEDULE (REF. DATUM POINT EQUIPMENT)						
NOZZLE	SERVICE	CONNECTION	FACE	X	Y	Z
TP 361	PRESSURE	M42x2	MALE	-65	-78	175
TP 363	RETURN	M52x2	MALE	-175	-78	175
TP 3610	OUTER CLAW - SEAFXING # 1	M42x2	MALE	418	410	275
TP 3612	OUTER CLAW - SEAFXING # 1	M42x2	MALE	418	410	175
TP 3614	INNER CLAW - SEAFXING # 1	M24x1.5	MALE	418	510	275
TP 3616	INNER CLAW - SEAFXING # 1	M24x1.5	MALE	418	510	175
TP 3618	LOCKING BOLT - SEAFXING # 1	M30x2	MALE	418	610	275
TP 3620	LOCKING BOLT - SEAFXING # 1	M30x2	MALE	418	610	175

1) DIN2353/ISO8434-1 ("WALFORM" from GS-HYDRO)  
 2) SAE J518. 3000 PSI  
 3) SAE J518. 6000 PSI  
 4) 50 Bar drilled to SAE J518. 3000PSI  
 5) Triplock SAE J514-37"

1

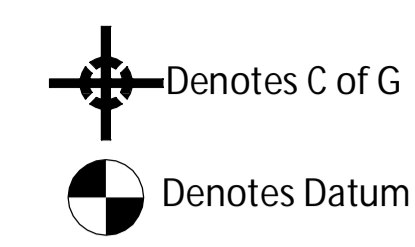
1	22-Apr-2015	As Built	FMA	EDAL	SIJA
0	1-Nov-2012	For Information	EDAL	BJVI	SIJA

Rev: Date Description Made Checked Appr

**NATIONAL OILWELL VARCO**  
 National Oilwell Varco Norway AS  
 SERVICEBOX 401, LUNDSIDEN  
 N-4604 KRISTIANSAND, NORWAY

Title: GENERAL ARRANGEMENT DRAWING BOP/LMRP SEAFXESTING

Scale: 1:5 Projection: Size: A1 Main Part:  
 Drawing Number: G4736-D1165-G0003 Sheet: 1/1 Revision: 1



**TECHNICAL DATA:**

Global Co-ordinate System  
 X-Horizontal Axis In FWD-AFT direction (FWD=+)  
 Y-Horizontal Axis In PORT-STB Direction (PORT=+)  
 Z-Vertical Axis (UP=+)

This Drawing to Be Read In Conjunction With:  
 Foundation Plan See Dwg. G4736-D1165-G0002  
 Control Console See Dwg. G4736-D1165-G0003  
 Hydraulic Flow Diagram See Dwg. G4736-D1165-H0001  
 Reaction Force Document See G4736-N-RD-001

All Pipework Between Control Console And Deck Manifolds To Be Supplied By KFELS.  
 Maximum Seafixing Capacity 480t

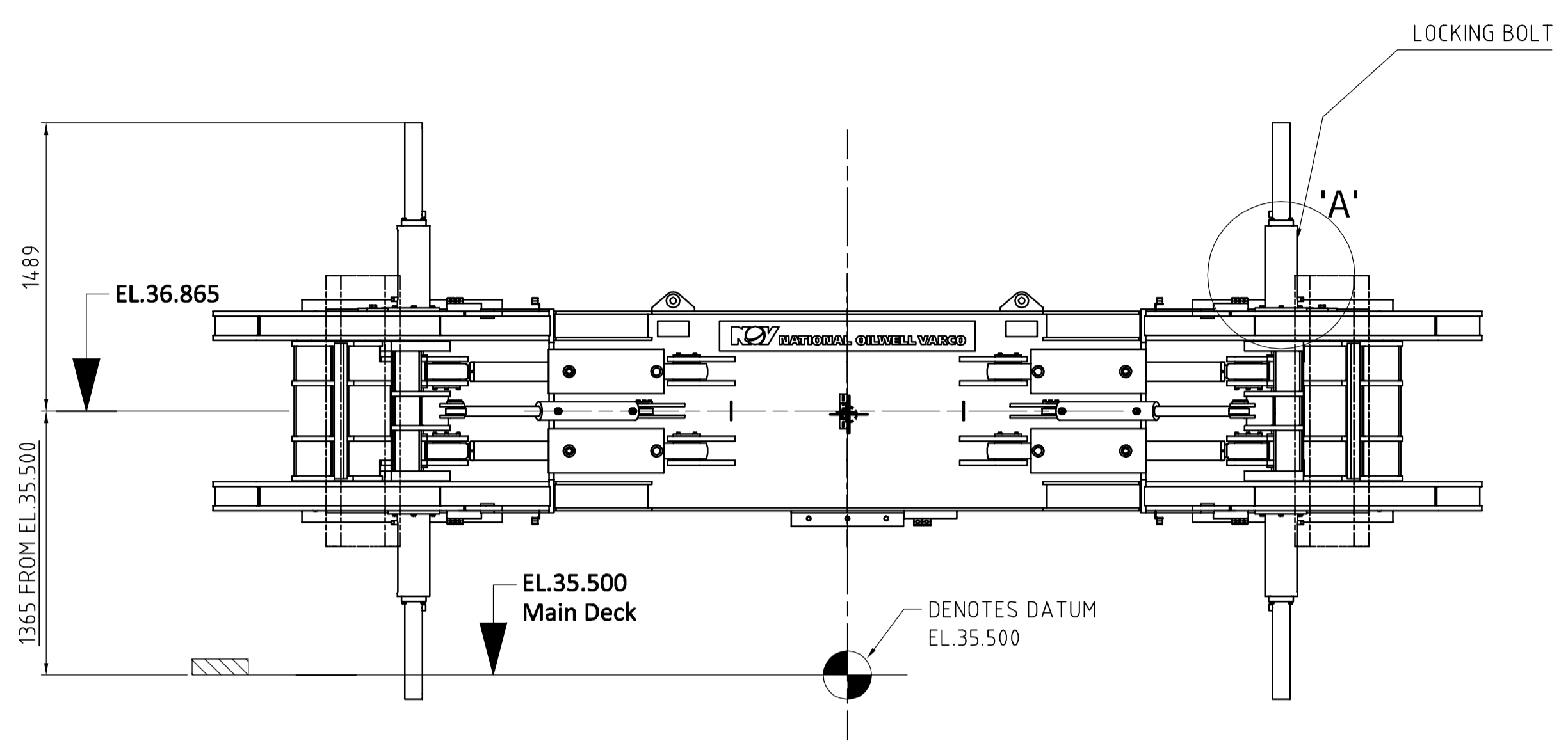
**UTILITY REQUIREMENTS:**

Oil Flow 210 l/min.  
 Oil Pressure 207 bar

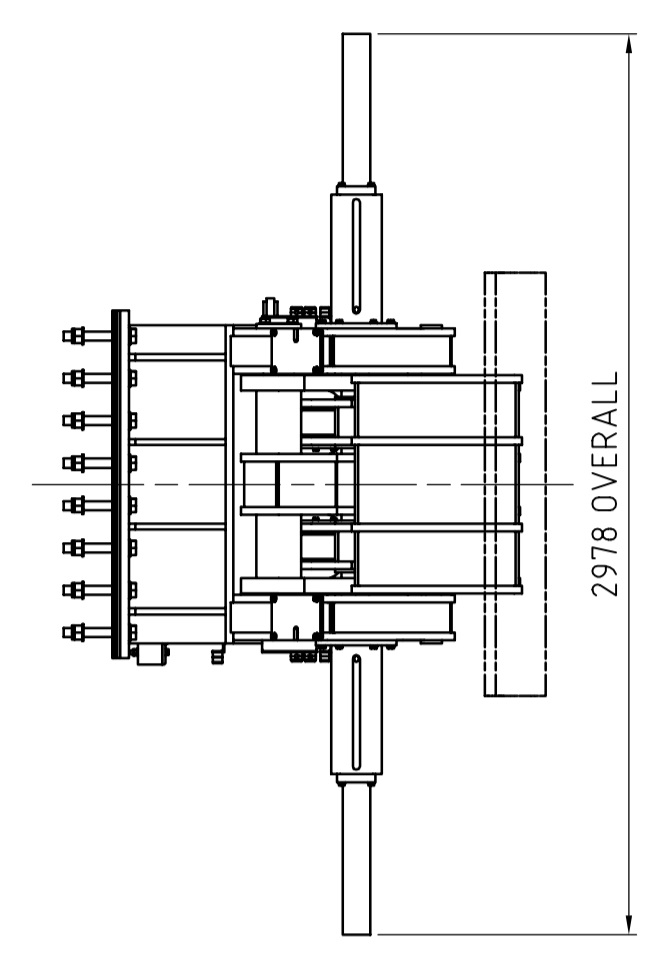
**SERVICE WEIGHTS:**  
 Seafixing 8 800 kg

**TOTAL WEIGHT:** 8 800 kg

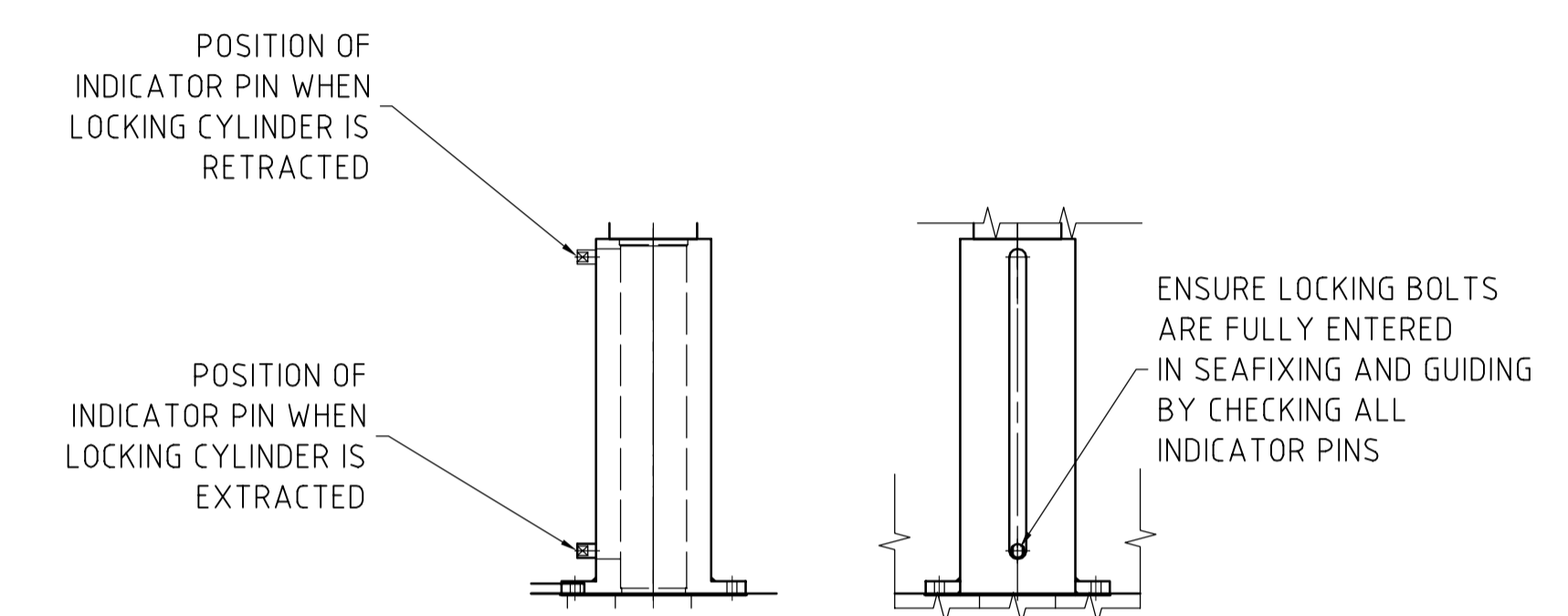
Model Number: BOP-SF-480  
 Tag Number: 364D1-MX001



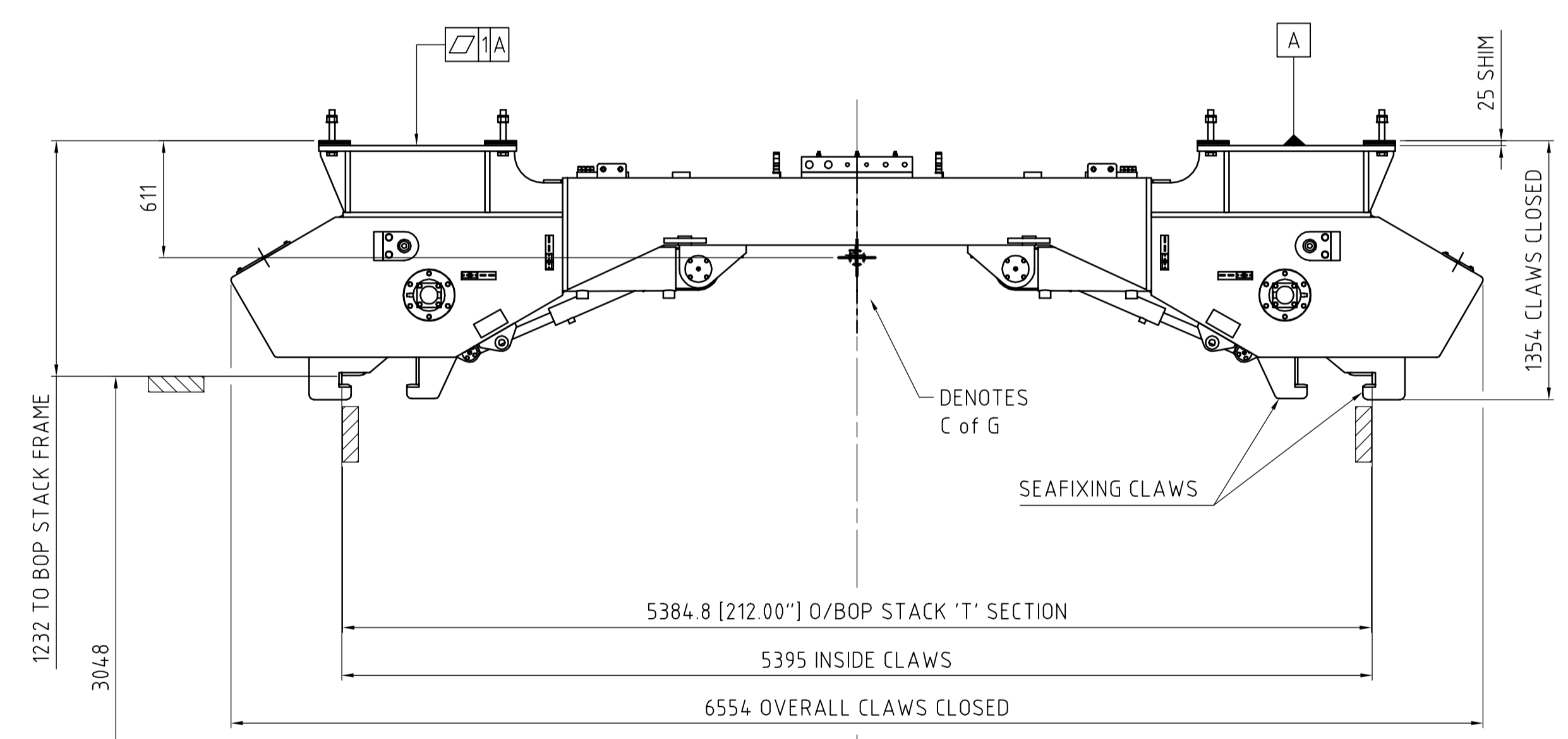
**ELEVATION LOOKING STB**



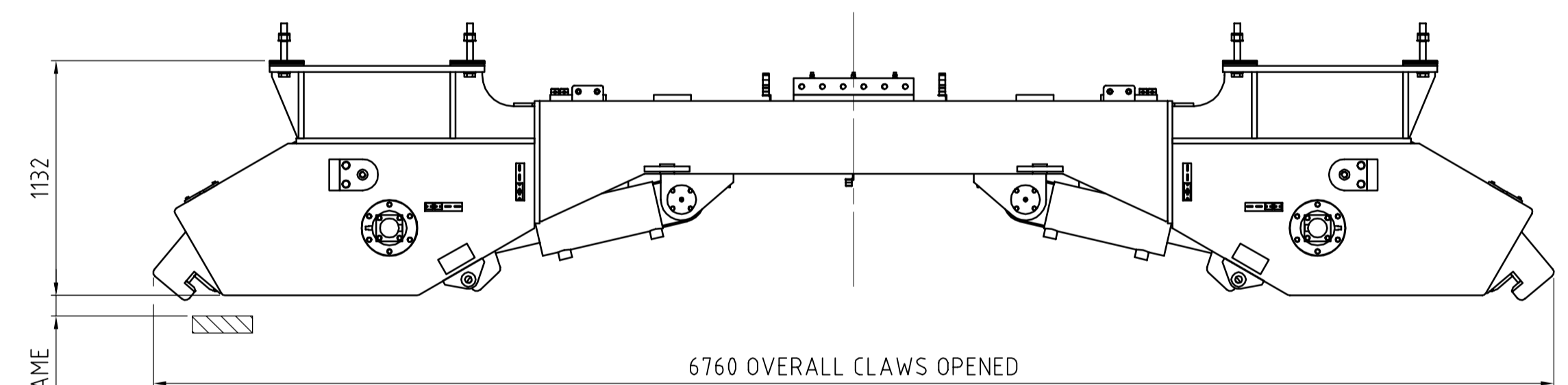
**ELEVATION LOOKING AFT**



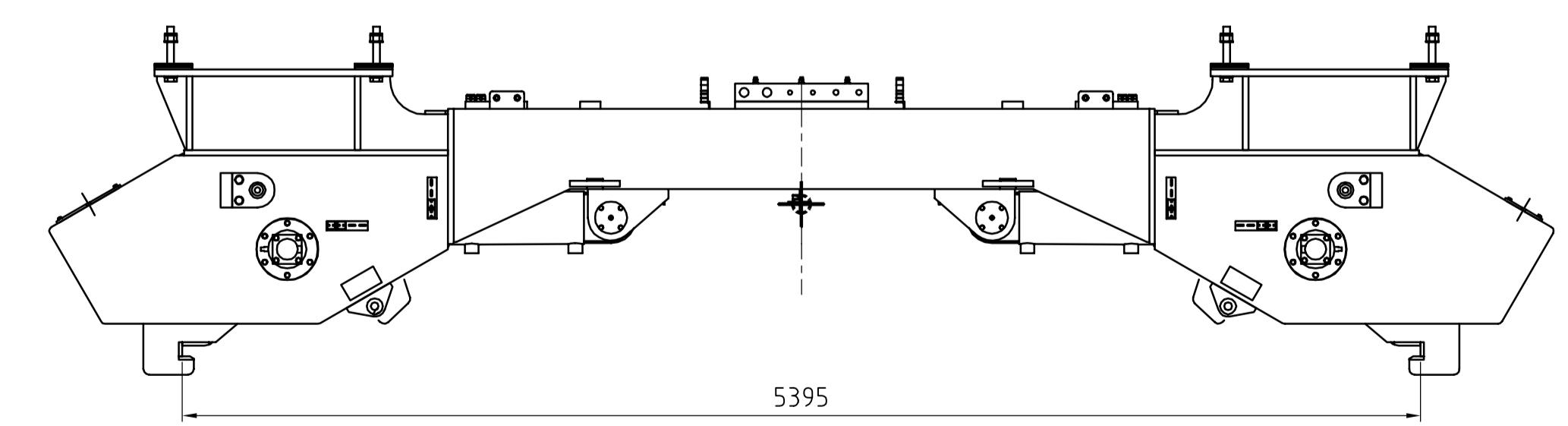
**Detail on 'A'  
 Lock Bolt Detail  
 (4 Places) Scale 1:10**



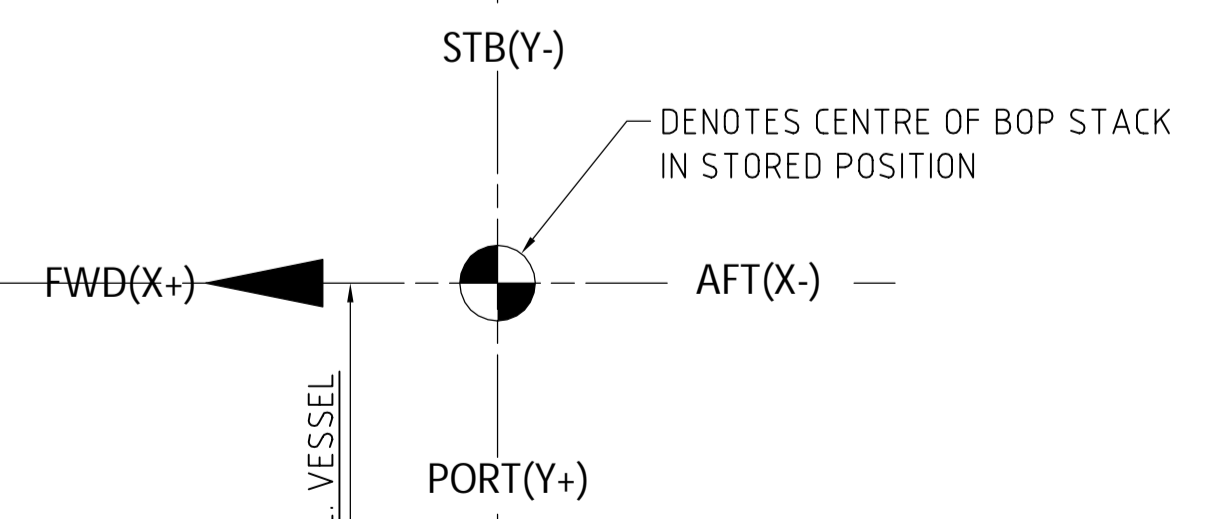
**PLAN VIEW**



**ALL CLAWS SHOWN IN  
 OPEN POSITIONS**



**GUIDING CONFIGURATION  
 ONLY OUTER CLAWS ENGAGED**



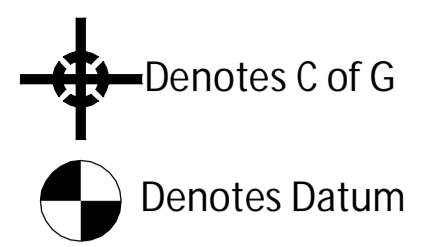
1	22-Apr-2015	As Built	FMA	EDAL	SIJI
0	1-Nov-2012	For Information	EDAL	B.JVI	SIJI
Rev:	Date	Description	Made	Checked	Appr.

THIS DOCUMENT IS THE PROPERTY OF NATIONAL OILWELL VARCO NORWAY AS. IT IS LOANED FOR LIMITED PURPOSES ONLY AND THE PROPERTY OF NATIONAL OILWELL VARCO NORWAY AS. REPRODUCTION, IN WHOLE OR IN PART, OR USE OF THIS DESIGN OR DISTRIBUTION OF THIS INFORMATION TO OTHERS IS NOT PERMITTED WITHOUT THE EXPRESS WRITTEN CONSENT OF NATIONAL OILWELL VARCO NORWAY AS. THIS DOCUMENT IS TO BE RETURNED TO NATIONAL OILWELL VARCO NORWAY AS, WITH INDEXES AND IN ANY EVENT UPON COMPLETION OF USE FOR WHICH IT WAS LOANED.

**NATIONAL OILWELL VARCO**  
 National Oilwell Varco Norway AS  
 SERVICEBOX 4 01, LUNDSIDEN  
 N-4604 KRISTIANSAND, NORWAY

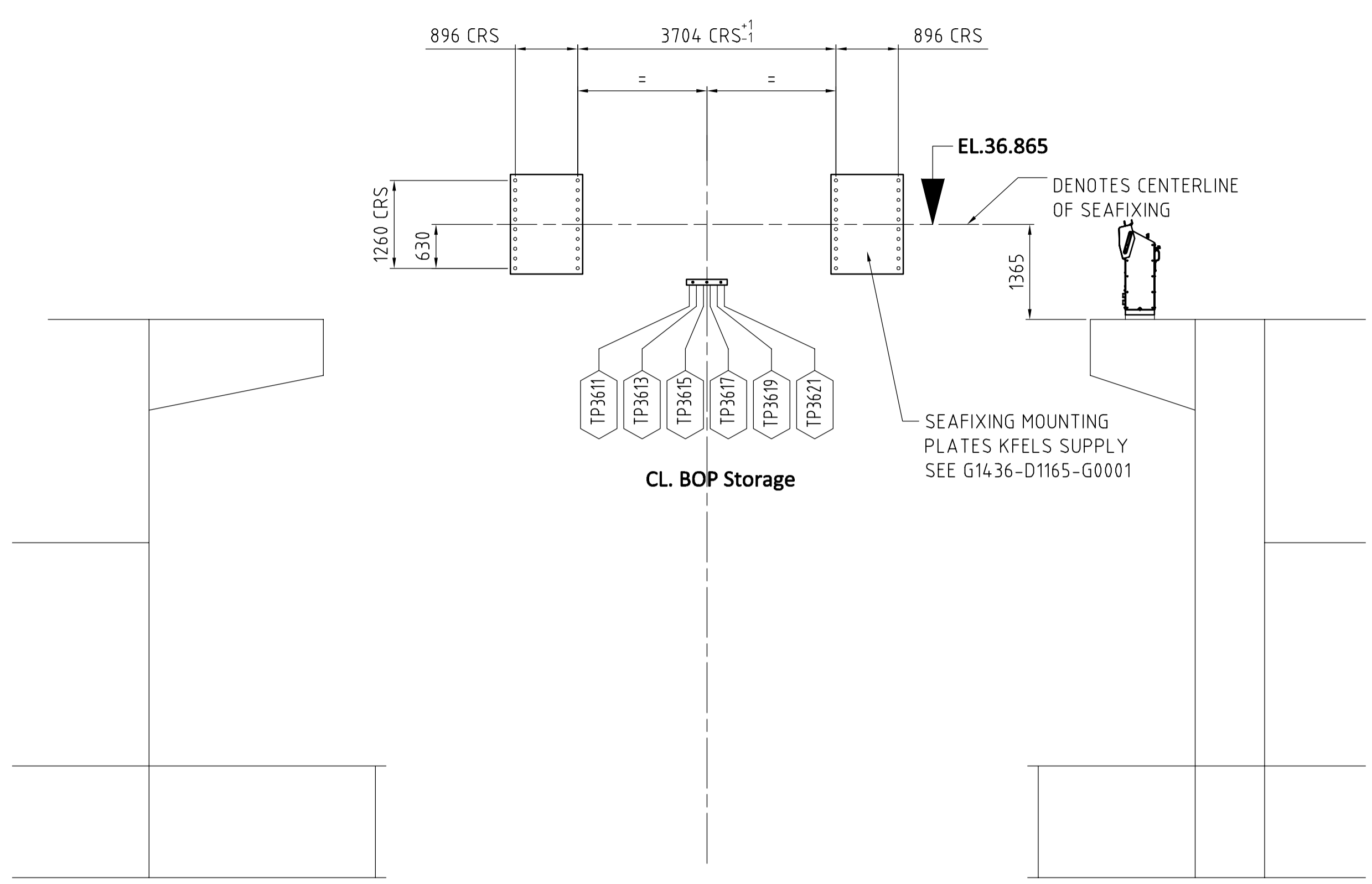
Title:  
**GENERAL ARRANGEMENT DRAWING  
 BOP/1 MRP SFAFASTFNING**

Scale:	1:25	Projection:	First Angle	Size:	A1	Main Part:	
Drawing Number:	G4736-D1165-G0001	Sheet:	1/1	Revision:	1		

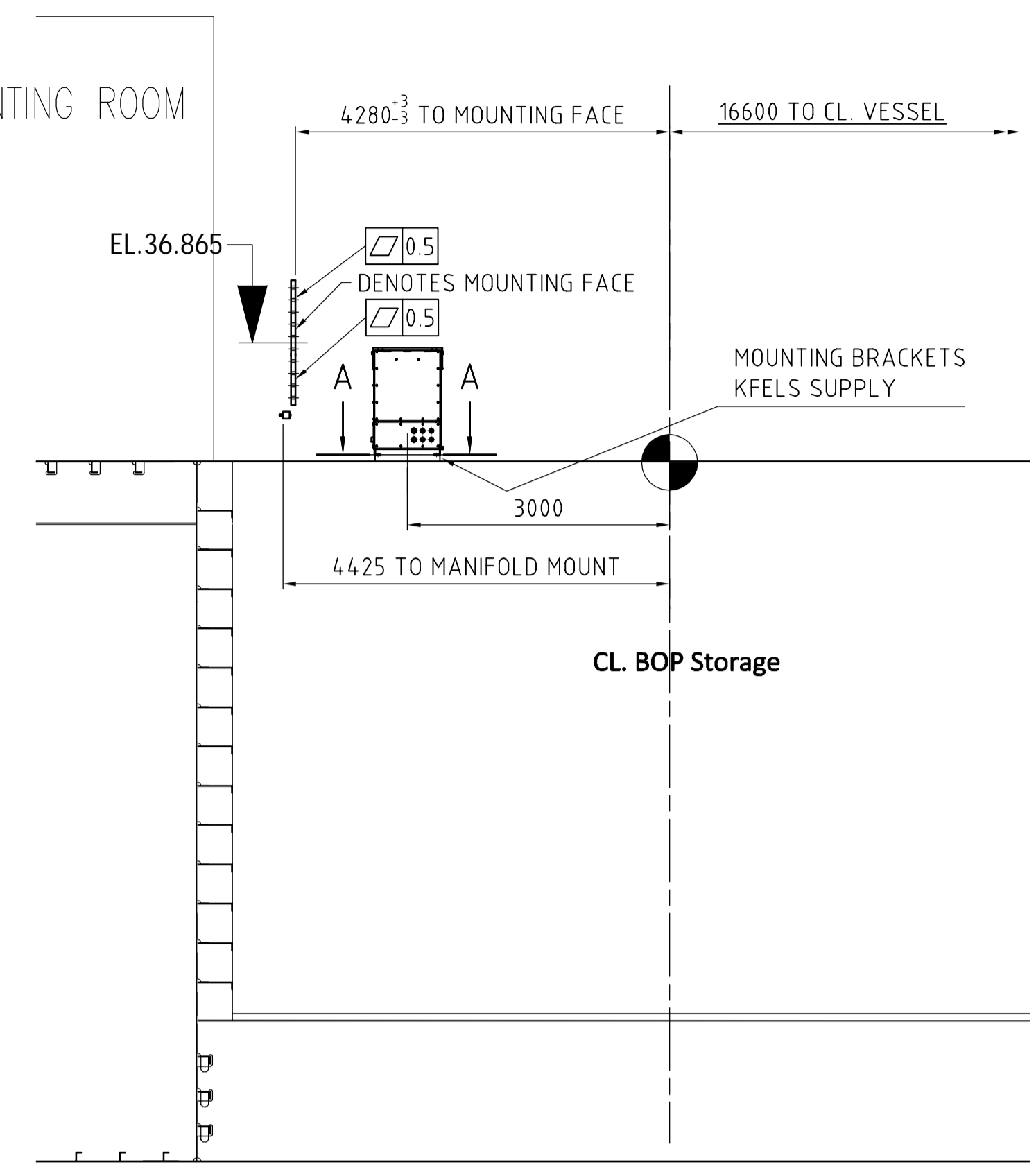


**TIGHTENING OF BOLTS**  
ALL BOLTS SLIGHTLY OILED  
Excerpt from H/UTP-15

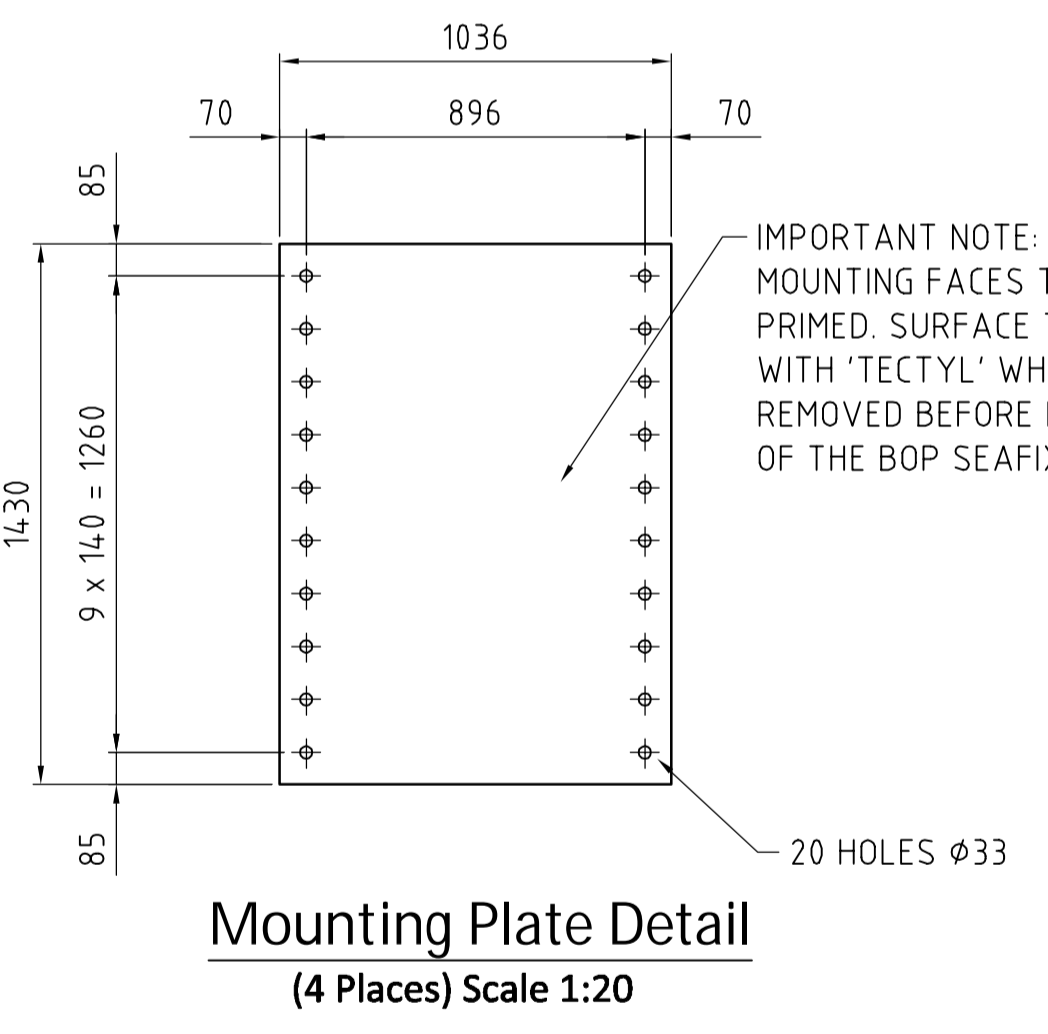
Size	Torque (Nm)	
	Grade 8.8, HDG	Grade 10.9, Phosphated, A4-80
M8	26	28
M10	50	56
M12	87	98
M14	137	156
M16	211	238
M18	294	332
M20	412	465
M22	554	626
M24	712	804
M27	1028	1161
M30	1402	1582
M33	1894	2133
M36	2440	2761
M39	3135	3543



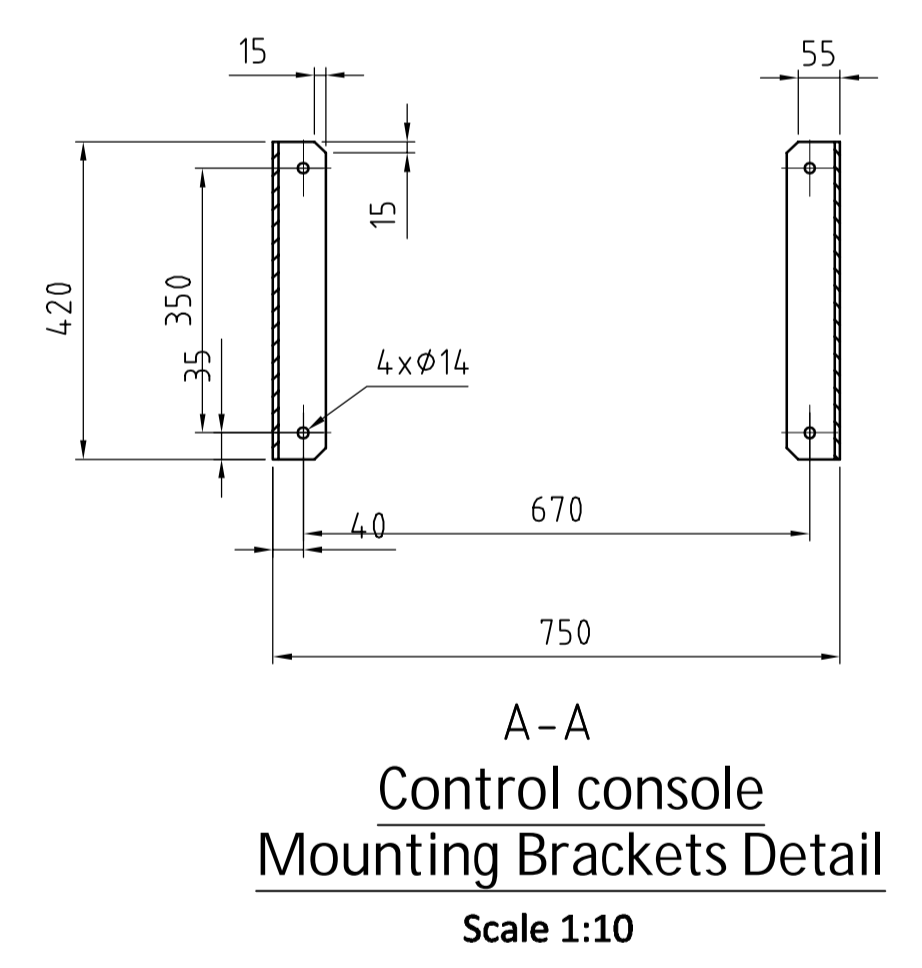
**ELEVATION LOOKING STB**



**ELEVATION LOOKING AFT**



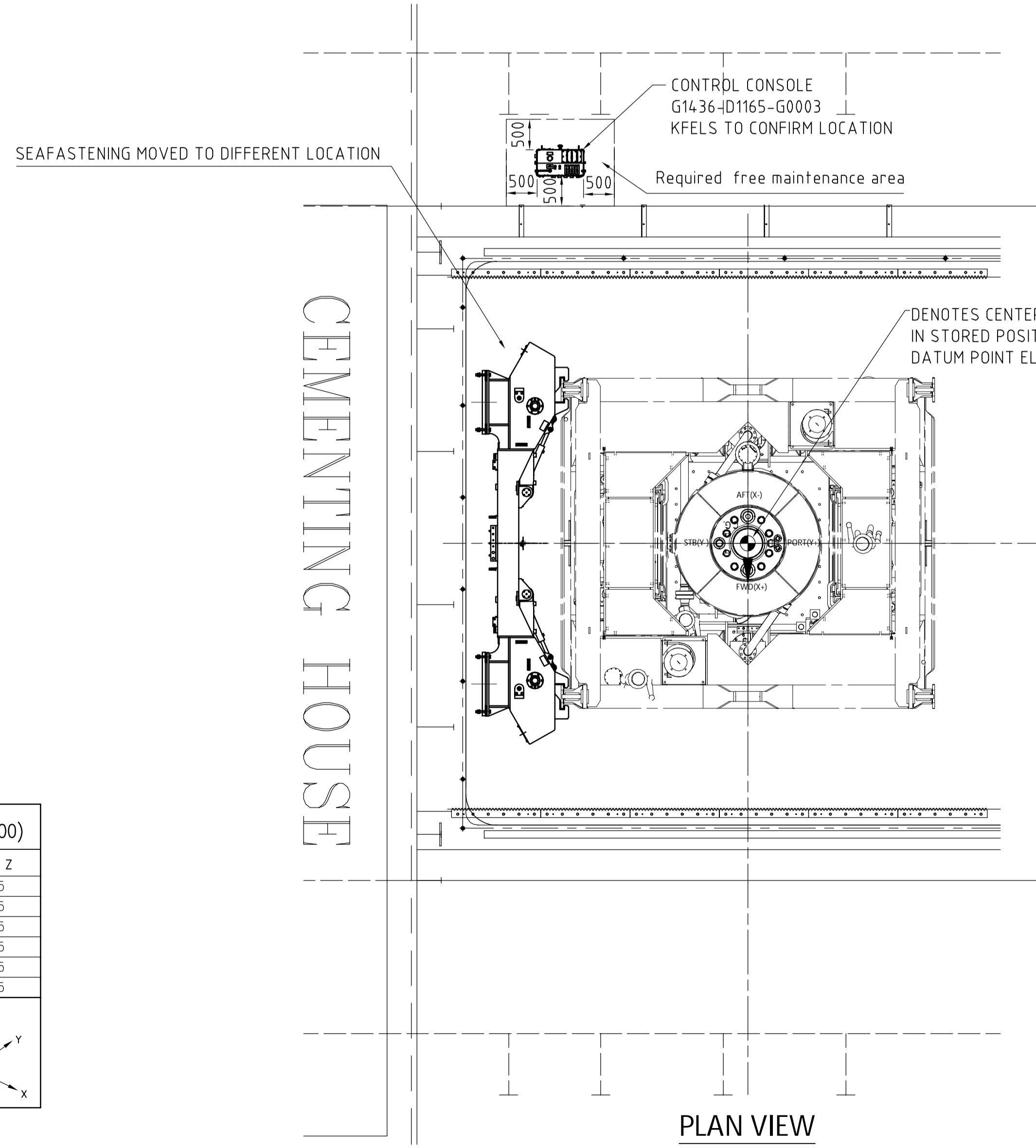
**Mounting Plate Detail**  
(4 Places) Scale 1:20



**NOZZLE SCHEDULE** (REF. DATUM POINT ON EL.35.500)

NOZZLE	SERVICE	CONNECTION	FACE	X	Y	Z
TP 3611	OUTER CLAW	M30x2	MALE	250	-4385	495
TP 3613	OUTER CLAW	M30x2	MALE	150	-4385	495
TP 3615	INNER CLAW	M24x1.5	MALE	50	-4385	495
TP 3617	INNER CLAW	M24x1.5	MALE	-50	-4385	495
TP 3619	LOCKING BOLT	M30x2	MALE	-150	-4385	495
TP 3621	LOCKING BOLT	M30x2	MALE	-250	-4385	495

1) DIN2353/S08434-1  
2) SAE J518. 3000 PSI  
3) SAE J518. 6000 PSI  
4) 50 Bar drilled to SAE J518. 3000PSI  
5) Triplock SAE J514-37'



**TECHNICAL DATA:**  
Global Co-ordinate System  
X-Horizontal Axis In FWD-AFT direction (FWD=+)  
Y-Horizontal Axis In PORT-STB Direction (PORT=+)  
Z-Vertical Axis (UP=+)

This Drawing to Be Read In Conjunction With:  
Seafixing GA See Dwg. G4736-D1165-G0001  
Control Console See Dwg. G4736-D1165-G0003  
Hydraulic Flow Diagrams See Dwg. G4736-D1165-H0001  
Reaction Force Documents See G4736-N-RD-001

All Pipework Between Control Console And Deck Manifolds To Be Supplied By KFELS.

1

1	22-Apr-2015	As Built	FMA	EDAL	SIAM
0	1-Nov-2012	For Information	EDAL	B.JVI	SIAM

Rev: Date Description Made Checked Appr.

NATIONAL OILWELL VARCO

National Oilwell Varco Norway AS  
SERVICEBOX 4.01, LUNDSIDEN  
N-4604 KRISTIANSAND, NORWAY

Title:  
**GENERAL ARRANGEMENT DRAWING**  
BOP/LMRP SEAFASTENING

Scale: 1:60 Projection: Size: A1 Main Part:  
Drawing Number: G4736-D1165-G0002 Sheet: 1/1 Revision: 1